

History of Kitakyushu Forum on Asian Women (KFAW)

August 23, 1989

The Asia Women's Forum as a System for Research on and Training of Asian Women (provisional name) was selected from among 101 entries for the City of Kitakyushu's Hometown Revitalization Project.

October 20, 1990

KFAW was officially established (First President; Ms. Hisako Takahashi).

October 1, 1993

KFAW received approval as an incorporated foundation from the Ministry of Labour and became an incorporated foundation.

July 1, 1995

The Kitakyushu Women's Center, MOVE, was established.

July, 2002

KFAW became the first NGO based in Kyushu region to acquire NGO Special Consultative Status to the United Nations Economic and Social Council (ECOSOC).

July 31, 2002

KFAW was awarded the Special Merit Prize for International Cooperation from Japan International Cooperation Agency (JICA).

April 1, 2006

KFAW was designated as a special management body to manage and operate Kitakyushu Municipal Gender Equality Center, MOVE.

November 2, 2009

KFAW concluded a Memorandum of Understanding (MOU) on Academic Exchange with Chungcheongnam-do Women's Policy Development Institute (CWPD), Korea.

April 1, 2011

KFAW was designated as the special management body to manage and operate Kitakyushu Municipal Gender Equality Center, MOVE, Kitakyushu Tobu Women's Community Center, and Kitakyushu Seibu Women's Community Center.

September 1, 2011

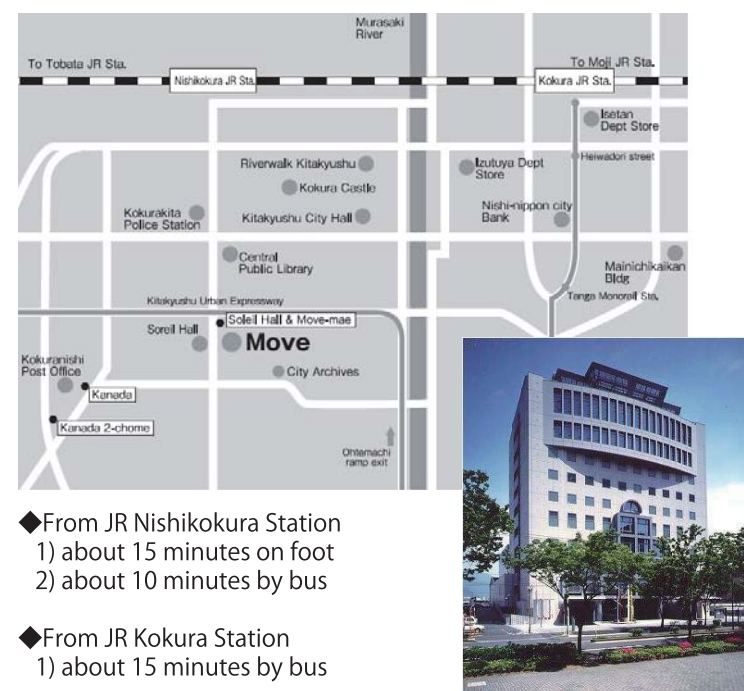
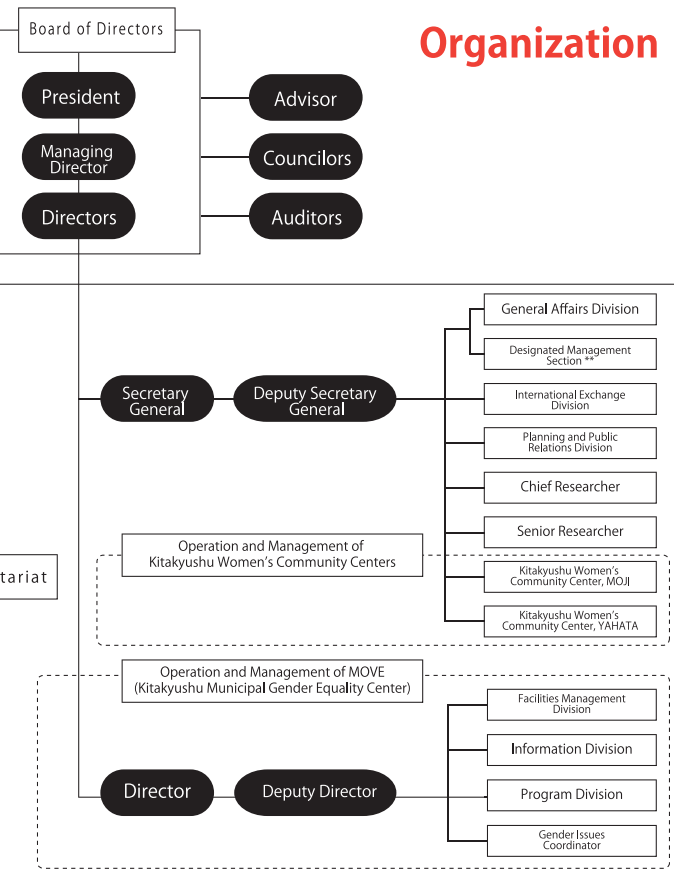
KFAW concluded an Agreement on Exchange and Cooperation with Incheon Development Institute (IDI), Korea.

April 1, 2013

KFAW transit to a public interest incorporated foundation.

Organization

Access



◆From JR Nishikokura Station
1) about 15 minutes on foot
2) about 10 minutes by bus

◆From JR Kokura Station
1) about 15 minutes by bus

◆Kitakyushu Urban Expressway
1) about 3 minutes from either Katsuyama or Otemachi ramp exit.

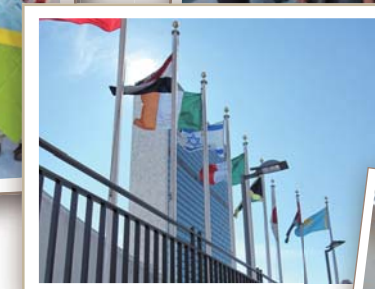
Kitakyushu Forum on Asian Women

公益財団法人 アジア女性交流・研究フォーラム



Viewing the **World** from **Kitakyushu**

To promote the improvement of women's status in Asia as well as their mutual understanding and cooperation



Working towards a gender-equal society



Developing global perspectives



Promoting residents' participation



Kitakyushu Otemachi Building, 3rd floor,
11-4 Otemachi, Kokurakita, Kitakyushu City, Fukuoka, 803-0814 Japan
TEL +81-93-583-3434 FAX +81-93-583-5195 Email kfaw@kfaw.or.jp URL <http://www.kfaw.or.jp>
facebook <http://www.facebook.com/kfaw.or.jp.en>

KFAW as a special management body

—KFAW is designated to manage and operate the following three centers.

Kitakyushu Municipal Gender Equality Center

MOVE

11-4 Otemachi, Kokurakita, Kitakyushu City,
Fukuoka, 803-0814 Japan
TEL +81-93-583-3939 FAX +81-93-583-5107
Email move@move-kitakyu.jp

Kitakyushu Tobu Women's Community Center

MOJI

6-8 Shimomaiso, Moji, Kitakyushu City,
Fukuoka, 800-0051 Japan
TEL +81-93-371-4649 FAX +81-93-371-4268
Email moji@kinroufujin-kitakyu.jp

Kitakyushu Seibu Women's Community Center

YAHATA

2-6-6 Ogura, Yahatahigashi, Kitakyushu City,
Fukuoka, 805-0059 Japan
TEL +81-93-661-1122 FAX +81-93-661-2714
Email yahata@kinroufujin-kitakyu.jp

Projects of Kitakyushu Forum on Asian Women (KFAW)

Mission

Promote a gender-equal society, improve the status of women and develop women's solidarity through research projects and international exchange programs on women's issues in Japan and other Asian countries, and contribute to the achievement of the goals of the International Women's Year: "Equality, Development and Peace."

The Kitakyushu Conference on Asian Women

International symposium pursuing the goal of a gender-equal society.

- ◇ "Women's Greater Participation in Japan and the World Brings Positive Change"
- ◇ "Get United—To Eliminate Violence against Women and Girls"



Projects to Promote International Understanding

Featuring themes that may interest even young people and men, international seminars and other events are held.

- ◇ KFAW Consulate Series
"Young Chinese Today"
"Vietnamese Historical Culture and Families"
- ◇ World Report "Wave the Magic Wand—In Communities Take Advantage of CEDAW!"



Study Tour

Study tour on international cooperation and gender issue was conducted.

- ◇ "Learn International Cooperation in the Philippines"



KFAW Oversea Network

KFAW strives to establish a permanent network with gender-related organizations in Asia to deal with gender issues.

- ◇ Chungcheongnam-do Women's Policy Development Institute (CWPD), Korea
- Concluded a Memorandum of Understanding on Academic Exchange in 2009.
- ◇ Incheon Development Institute (IDI), Korea
- Concluded an Agreement on Exchange and Cooperation in 2011.



Participation in the U.N. CSW

As an organization with the NGO Special Consultative Status to the U.N. ECOSOC, KFAW participates in the CSW and holds seminars as well as other events.

- ◇ CSW57 (2013)
Held a seminar "KFAW and the Prevention of Dating / Domestic Violence"
- ◇ CSW54 (2010)
Held a joint seminar "Empowerment of Rural Women in Japan and Korea with CWPD, Korea"



Survey and Research Activities

- ◇ Survey and Research by KFAW Researchers
- ◇ Survey and Research by KFAW Visiting Researchers

※ Working Papers are available on our website.



KFAW Asian Researchers Network Seminar

KFAW Asian Researchers Network holds seminars mainly in Kitakyushu.

- ◇ Seminars in FY2013
"Bangladesh's Strategy for Regional Development - Grameen Bank's Social Business and Women's Empowerment"

"Efforts, Results, and Challenges Concerning the U.S. Support for Sexual Violence Victims"



Program Development

- ◇ Career Development Program for Female Students
On-site seminars with a theme of "Career Development for Female Students" were held at universities and colleges in the city.



- ◇ Prevention Education on Dating Violence
Trained facilitators for preventive education on dating violence and held on-site seminars at high schools in the city.



Publication of Asian Breeze

Publication of the newsletter, *Asian Breeze*, in Japanese and English in order to provide information about women in the Asia-Pacific region and the KFAW's activities.



Foreign Correspondent Program

In order to expand KFAW's networks and collect data on the status of women from overseas, KFAW publicly recruit foreign correspondents from around the world.

The back numbers of *Asian Breeze* and foreign correspondents' reports are available on our website.

Official Website <http://www.kfaw.or.jp>

facebook <http://www.facebook.com/kfaw.or.jp>

Projects of Kitakyushu Municipal Gender Equality Center, MOVE

Mission

Promote a formation of a gender-equal society through deepening the citizens' understanding about gender equality and supporting activities by the citizens and private organizations toward a creation of a gender-equal society.

Gender Equality Projects

- ◇ Gender equality seminar
- ◇ Next-generation leader development seminar
- ◇ Training for women entrepreneurs
- ◇ Cooking classes for fathers and children
- ◇ Training course for Caremen
- ◇ Reproductive health & rights projects



Publications

- ◇ Booklet Men's Nursing Care
And become a Caremen, 2014
- ◇ Guidebook on gender equality
Manami, 16 years Old (Manga), 2011
- ◇ Gender White Paper Series
Active Seniors Will Change Japan, 2013
Pop Culture and Gender, 2012
- ◇ Information Magazines
Moving
Cutting-Edge



Counseling Services

Counseling is available via phone or in person regarding mental issues, daily living, human rights violations, legal affairs, employment, and other issues.

- ◇ Counseling on human rights violations related to gender issues
- ◇ Counseling and support for women's employment
- ◇ Counseling for men
- ◇ Counseling for women

MOVE Festa

Comprising projects such as seminars and joyful events planned by MOVE and citizens to promote a gender-equal society.



MOVE Library

MOVE collects books and materials regarding gender equality.

The library keeps approximately 50,000 books and training DVDs!

The back numbers of *Moving* and *Cutting-Edge* are available on website.

Official Website <http://www.kitakyu-move.jp/>

Projects of Kitakyushu Women's Community Center (MOJI, YAHATA)

Mission

Carry out a comprehensive projects of women's welfare in order for both men and women to pursue bright and affluent life through well-balanced career and family life

Gender Equality Support Projects

- ◇ Courses on gender issues
- ◇ DV and sexual harassment prevention awareness projects
- ◇ Media literacy courses



Courses on Daily Life Techniques

- ◇ Child-rearing support projects
- ◇ Life support projects



Employment Support and Career Improvement Projects

- Support women's challenges for economical empowerment.
- ◇ Acquisition of certification needed for employment
- ◇ Improving career prospects for working women
- ◇ Support for women entrepreneurs

---and more

Support for Citizens' Activities and Partnership Projects

Encourage spontaneous and creative activities of various groups / organizations targeting a gender-equal society by assisting active exchanges among them

- ◇ Citizens'-planned projects
- ◇ International exchange projects

---and more

Renting books and rooms are available.

MOJI's Official Website
<http://kinroufujin-kitakyu.jp/moji/>

YAHATA's Official Website
<http://kinroufujin-kitakyu.jp/yahata/>